

Main Feature

1. 2-Poles and 3-Poles versions available with switching current 10A.
2. Socket type. Easy to mount.
3. Both AC and DC coil available.
4. Low coil power consumption with high response time.
5. High reliability and long life with better vibration and shock resistance.



Contact Rating

| Load Type | RK-2P | RK-3P |
|----------------------------|------------|------------|
| Rated Load (Resistive) | 10A 240VAC | 10A 240VAC |
| Rated Carrying Current | 10A | 10A |
| Max. Allowable Voltage | AC 240V | AC 240V |
| | DC 110V | DC 110V |
| Max. Allowable Current | 10A | 10A |
| Max. Allowable Power Force | 2400VA | 2400VA |
| | 364W | 364W |
| Contact Material | Ag Alloy | Ag Alloy |
| Contact Form | DPDT | 3PDT |

Application

Vending Machine, Cooking Appliances, Office Machine, Domestic Appliances, Control Equipment...etc.

Performance (at Initial Value)

- Contact Resistance 100mΩMax. @1A,6VDC
- Operate Time..... 25 mSec. Max.
- Release Time 25 mSec. Max.
- Dielectric Strength:
Between Coil & Contact 1,000VAC at 50/60 Hz for one minute.
Between Contacts 1,000VAC at 50/60 Hz for one minute.
- Surge Strength 3,000V (between Coil & Contact 1.2x50μSec.)
- Insulation Resistance 100 MegaΩ Min. at 500VDC.
- Max. On/Off Switching:
Electrical..... 6 Cycles per Minute.
Mechanical 300 Cycles per Minute.
- Temperature Range..... -10~40°C
- Humidity Range 35~85% RH.

- Vibration:
Endurance 10 to 55 Hz dual amplitude width 1.5mm.
Error Operation..... 10 to 55 Hz dual amplitude width 1.5mm.
- Shock:
Endurance 1,000m/S².
Error Operation..... 100 m/S².
- Life Expectancy:
Mechanical 10⁷ Operations at No Load condition.
Electrical 10⁵ Operations at Rated Resistive Load.
- Weight About 2P : 72.6 g.
3P : 81.2 g.

Accessories & Sockets

RK-2P

- PF-083A/AE See Page 175
- PF-083BE See Page 175

RK-3P

- PF-113A/AE..... See Page 176
- PF-113BE See Page 176

Safety Standard & File Number

- UL & C-UL E175730

Coil Specification (at 20°C)

| Coil Sensitivity | Coil Voltage Code | Nominal Voltage (VAC/VDC) | Nominal Current (mA) | | Coil Resistance ($\Omega \pm 10\%$) | Power Consumption | | Pull-In Voltage | Drop-Out Voltage | Max. Allowable Voltage |
|------------------|-------------------|---------------------------|----------------------|--------|---------------------------------------|-------------------|-------------|-----------------|------------------|------------------------|
| | | | 50 Hz | 60 Hz | | 50HZ | 60HZ | | | |
| AC Coil | 01 | 6 | 404.00 | 360.00 | 5.3 | 2.40VA | 2.16VA | 80% Maximum | 30% Minimum | 110% |
| | 02 | 12 | 169.63 | 139.53 | 21.5 | 2.04VA | 1.67VA | | | |
| | 03 | 24 | 69.74 | 59.84 | 91 | 1.67VA | 1.44VA | | | |
| | 06 | 120 | 20.10 | 16.40 | 1,620 | 2.41VA | 1.97VA | | | |
| | 08 | 240 | 7.82 | 6.68 | 7,100 | 1.87VA | 1.6VA | | | |
| DC Coil | 02 | 12 | 126 | | 95 | Abt. 1.5W | 80% Maximum | 10% Minimum | 110% | |
| | 03 | 24 | 56 | | 430 | | | | | |
| | 04 | 48 | 29.5 | | 1,630 | | | | | |
| | 05 | 110 | 16.2 | | 6,800 | | | | | |
| | 06 | 120 | 17.6 | | 6,800 | | | | | |

Ordering Information

RK - 2 01 D M L T

Touch Button:

Nil: Without Test Button

T: With Test Button

LED:

Nil: Without LED

L: With LED Selection (Use Polarity LED)

Z: Coil Parallel with Diode & the Positive Pole "+" On #2 Terminal

X: Coil Parallel with Diode + LED & the Positive Pole "+" On #2 Terminal

Contact Form:

Nil: Form C

M: Form A

B: Form B

Coil Type:

D: DC Coil

A: AC Coil

Coil Code:

01: 6V, **02:** 12V, **03:** 24V, **04:** 48V

05: 110V, **06:** 120V, **08:** 240V

Number of Pole:

2: 2 Poles

3: 3 Poles

Type:

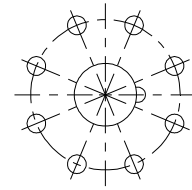
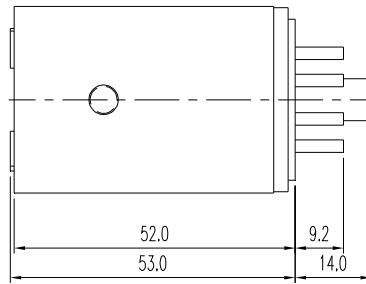
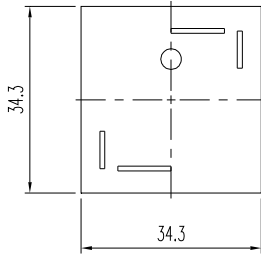
RK

Classification

| Model | RK | | | | | |
|-----------------|---------------|-----------------|-----------------|--------------------|----------------------|-----------------------|
| Coil Type | AC Coil | | | DC Coil | | |
| Number Of Poles | 2 Poles | | 3 Poles | 2 Poles | | 3 Poles |
| Contact Form | 2C / 3C | 2A / 3A | 2B / 3B | 2C / 3C | 2A / 3A | 2B / 3B |
| Terminal Type | RK-2/3□A□□ | RK-2/3□AM□□ | RK-2/3□AB□□ | RK-2/3□D□□ | RK-2/3□DM□□ | RK-2/3□DB□□ |
| LED | RK-2/3□□A/AL□ | RK-2/3□□AM/AML□ | RK-2/3□□AB/ABL□ | RK-2/3□□D(DL/Z/X)□ | RK-2/3□□DM(DML/Z/X)□ | RK-2/3□□DB(DBL/Z/X) □ |
| Touch Button | RK-2/3□□□□T | RK-2/3□□□□T | RK-2/3□□□□T | RK-2/3□□□□T | RK-2/3□□□□T | RK-2/3□□□□T |

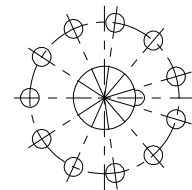
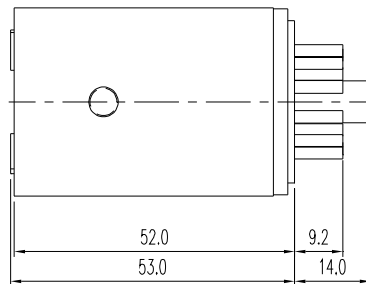
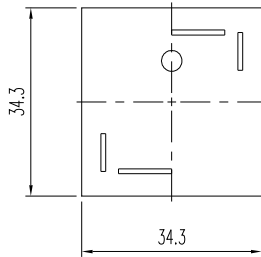
Dimension ($\leq 5\text{mm} \pm 0.2\text{mm}$, $> 5\text{mm} \pm 0.3\text{mm}$, the tolerance of PCB thru hole: $+0.1\text{mm}$)

RK-2P



Bottom view

RK-3P



Bottom view

Wiring diagrams (Bottom view)

| RK-2P | | |
|---------------------|-------------------------------|-------------------|
| <p>RK-2□□D(A)□□</p> | <p>RK-2□□D□L□</p> | <p>RK-2□□D□Z□</p> |
| <p>RK-2□□D□X□</p> | <p>AC Coil Model With LED</p> | |
| RK-3P | | |
| <p>RK-3□□D(A)□□</p> | <p>RK-3□□D□L□</p> | <p>RK-3□□D□Z□</p> |
| <p>RK-3□□D□X□</p> | <p>AC Coil Model With LED</p> | |