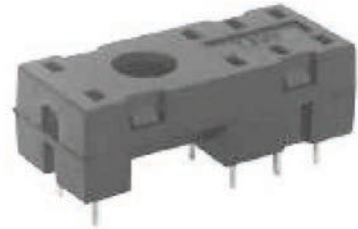


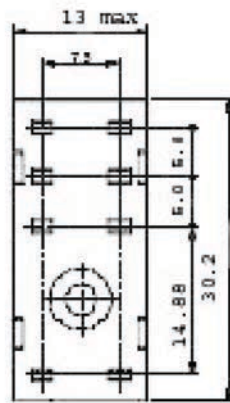
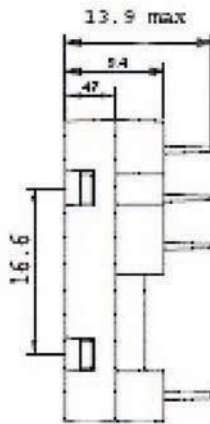
CHARACTERISTICS:-

Rated voltage:-300VAC
 Rated current:-5A
 Insulation Voltage:- >3KV
 Socket material:-Flame retardance-PA46-S250F6 (V0)
 Contact spring material:-QSn6.5-0.1
 Hold down spring (on request):-No



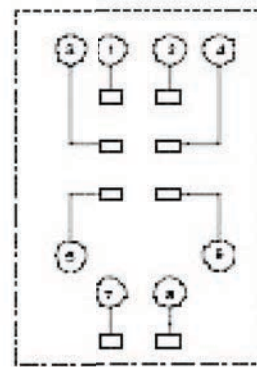
DIMENSIONS PC BOARD LAYOUTS & WIRING DAIGRAM (mm)

Outline Dimensions



(Top View)

Wiring Diagram



(Top View)